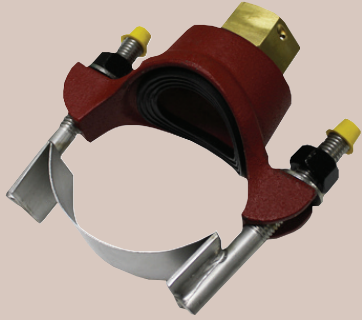




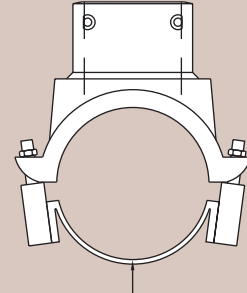
Series  
SDF

# Saddle Fittings

Secures TBS, IPFS, IEFS Flow Sensors to 3 to 24" Pipe



SDF-I-XX



PIPE DIAMETER  
[SEE "PIPE SIZE" IN MODEL CODE]

Iron

The Series SDF Saddle Fittings are available for pipe sizes ranging from 3 to 24" and securely attach Series TBS, IPFS and IEFS flow meters to process application. Offered in ductile iron, the SDF can be used with almost any piping arrangement and is provided with o-rings, simplifying installation.

### SPECIFICATIONS

**Service:** Compatible liquids.

**Wetted Materials:** See model chart.

**Temperature Limits:** See flow meter dependent.

**Pressure Limits:** See flow meter dependent.

**Pipe Sizes:** 3 to 24".

**Weight:** Consult factory.

FLOW

Flow Transmitters, Paddlewheel, Adjustable Insertion

Example	SDF	I	03	15	SDF-I-03-15
Series	SDF				Saddle Fittings for TBS, IPFS and IEFS Flow Sensors
Material		I			Iron
Pipe Size			03		3"
			06		6"
			08		8"
			10		10"
			12		12"
			14		14"
			16		16"
			18		18"
			20		20"
			22		22"
			24		24"
Thread Size				15	For Series IEFS, IPFS, TBS non hot-tap models (1-1/2" male NPT)
				20	For Series IEFS, IPFS, TBS hot-tap models (2" male NPT)