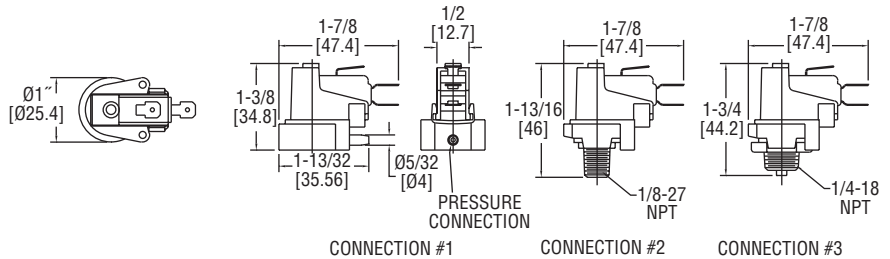
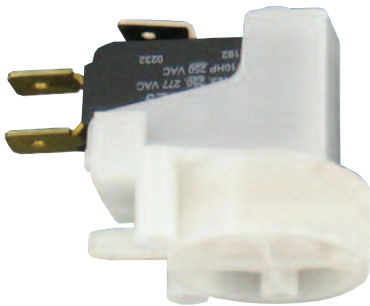




Series A7 Mini Pressure Switch

Specifications - Installation and Operating Instructions



Series A7 Mini Pressure Switches have been designed for high current applications. These switches are small and inexpensive, making them ideal for OEM use. The Series A7 switches utilize a high-quality snap-action switch, which is diaphragm actuated. They have a silicone diaphragm and nylon housing. The A7 switches are compact and lightweight which adds to the ease of installation. The set point must be factory set, but a broad operating range makes them great for a variety of applications.

Models are built to your specification

*Setpoint is factory preset and is not field adjustable.

Minimum quantity order is 100.

INSTALLATION/MOUNTING

The switch can be mounted in any position. Do not twist the case when installing.

WIRING

All wiring must conform to the National Electrical Code and local regulations. Do not install the control to handle loads in excess of the electrical rating shown in the specifications. The terminals are labeled on the switch itself.

SPECIFICATIONS

Service: Non-hazardous gas or liquid.

Wetted Materials: Silicone and nylon.

Temperature Limits: 14 to 185°F (-10 to 85°C).

Pressure Limits: 50 psig (3.45 bar).

Enclosure Rating: General purpose.

Repeatability: ±10% of setpoint.

Mounting Orientation: Switch can be installed in any position.

Weight: 0.04 lb (0.02 kg).

Deadband: 0.6 to 0.8 in w.c. (1.5 to 2 mbar).

CAUTION: No lubrication or periodic servicing is required. Mount the control securely. Never exceed the electrical rating for the switch. Use the control only with compatible medias.

MAINTENANCE

Upon final installation of the Series A7 Mini Pressure Switch, no routine maintenance is required. A periodic check of the system calibration is recommended. The Series A7 is not field serviceable and should be returned if repair is needed (field repair should not be attempted and may void warranty). Be sure to include a brief description of the problem plus any relevant application notes. Contact customer service to receive a return good authorization number before shipping.

MODEL ORDERING CHART

Example	A7	1	3	1	1	A7-2211-10.00
Series	A7					Mini Pressure Switch
Switch Type		1				SPDT
		2				SPST - NO
Electrical Rating			1			0.1A @ 125/250 VAC (gold contacts)
			2			3A @ 125/250 VAC
			3			5A @ 125/250 VAC
			4			16A @ 125/250 VAC
			5			22A @ 125/250 VAC
Electrical Connection				1		4.88 mm male Q.C. tabs
				2		6.35 mm male Q.C. tabs
Process Connection					1	4 mm tube O.D. push on (side)
					2	1/8" male NPT (bottom)
					3	1/4" male NPT and 4 mm tube O.D. push on (bottom)
Set Point					00.00	In psi. Must be in the range of 0.25 to 15.00 psi.