

# MT502 Load Cell



## Features

- Tool Steel Construction**
- Electroless Nickel plated**
- IP67 Sealing**
- Welded Sealing**

## Applications

- **Testing machines**
- **Low profile weighing**
- **Overhead weighing**
- **Suitable for compression and tension applications**

## Specifications

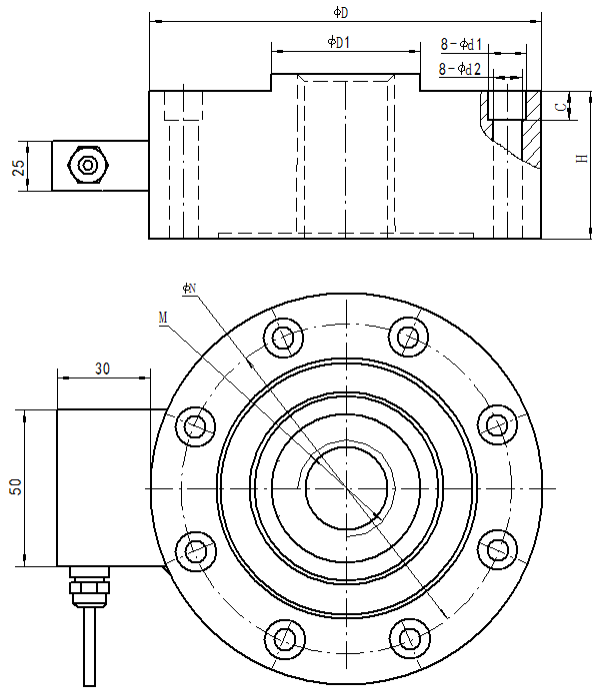
Capacity	t	1,2,5,10,20,50
Combined Error	(%FS)	±0.050 (1-20t) , 0.1%(50t)
Creep (30 minutes)	%FS/30min	±0.050
Temperature effect on sensitivity	(%FS/10C)	±0.050
Temperature effect on zero	(%FS/10C)	±0.050
Output sensitivity	(mv/v)	2.0±0.01
Input resistance	(Ω)	350+/-5
Output resistance	(Ω)	350+/-3
Insulation resistance	(MΩ)	≥ 5000 (50VDC)
Zero balance	(%FS)	1.0
Temperature, Compensated	(°C)	-10 ~ +40
Temperature, Operating	(°C)	-25 ~ +65
Excitation, Recommended	(V)	5 ~ 12(DC)
Excitation, Max	(V)	18(DC)
Safe overload	(%FS)	150
Ultimate overload	(%FS)	300



Millennium Mechatronics Limited  
 Email: [info@meltrons.com](mailto:info@meltrons.com) | [www.meltrons.com](http://www.meltrons.com)



# MT502 Load Cell



Capacity	D	D1	H	C	d1	d2	M	N
1t	105	28	35	7	10	6	M14*2	89
2t	105	28	35	7	10	6	M14*2	89
5t	120	33	45	10.5	14.5	9	M20*1.5	96.5
10t	155	61	50	15.5	20	13.5	M32*2	128
20t	155	61	50	15.5	20	13.5	M32*2	128
50t	200	75	70	20	32	21	M45*3	156.5

## Dimensions (mm)

### Wiring Code

Cable length 5 m long, 5.8mm dia, 6 core

Green Exc+, Yellow Sense+

Black Exc-, Blue Sense-

White Signal+, Red Signal-

Specifications are subject to change without notice for improvement



Millennium Mechatronics Limited  
Email: [info@meltrons.com](mailto:info@meltrons.com) | [www.meltrons.com](http://www.meltrons.com)

