

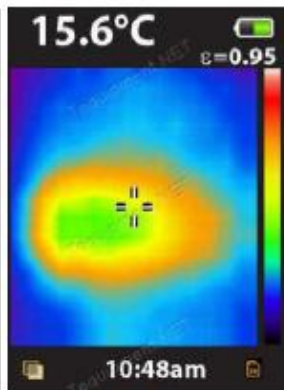
## Fluke VT02 Visual IR Thermometer



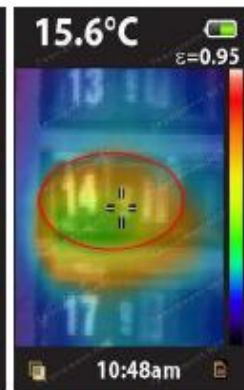
VT02 Visual IR Thermometer



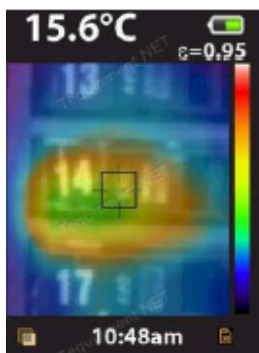
Full visual



Full thermal



50% blend clearly identifies location



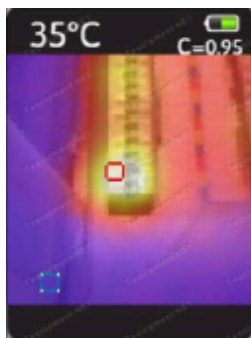
### Measure with confidence

Traditional infrared thermometers may seem affordable and convenient, but they only show an average temperature of an area and the farther away, the less accurate. Because traditional infrared thermometers only measure an average area, it is often impossible to accurately identify what you are actually measuring; with the Fluke VT02 Visual Thermometer you get the visual image of exactly what you are measuring.



### Detect issues instantaneously

Eliminate the tedious tasks of taking multiple grid readings and manual recording of temperature measurements with an IR thermometer. Lose the pen, paper, and clipboard, the Fluke VT02 saves a blended infrared and visual image with every image capture instantly! In one blended picture your customers get the complete picture and can compare readings from different dates which saves them valuable time and ultimately money.



### Pinpoint with hot and cold markers.

Half of the issue is detecting where it started. While a blended picture speaks a thousand words, so do hot (red box) and cold (blue box) spot markers. When you see a hot or cold spot, you can save the image with the temperature reading and pinpoint the exact location using the blending between full thermal to full visual.



### Document problems with SmartView® software - a brilliant way to sell yourself

Producing a professional report with Smartview® Software is just as powerful as the VT02 tool itself. Your customers will be able to communicate the issues that they've detected or document repairs that have been fixed.