



PRODUCT DATASHEET KELVIN

MULTI-USE CELLULAR CONNECTED TEMPERATURE DATA LOGGER WITH LCD DISPLAY

KELVIN M200



Monitor Your Moving Temperature-Sensitive Assets

Understanding how temperature-sensitive and high-value assets are handled and stored throughout the supply chain is critical. The solution enables greater visibility, reduces asset damage & waste and simplifies compliance for assets that are sensitive to environmental conditions.



Temperature Monitoring



Real-Time Location Tracking*



LCD Display for Temperature Reading



Tamper Detection



Shock Detection



Flight Mode
(IATA, FAA Compliant)



High-Precision Digital Sensor



Geofencing

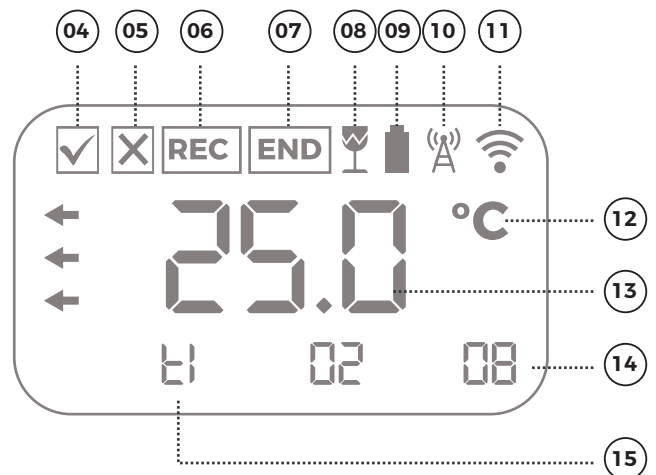
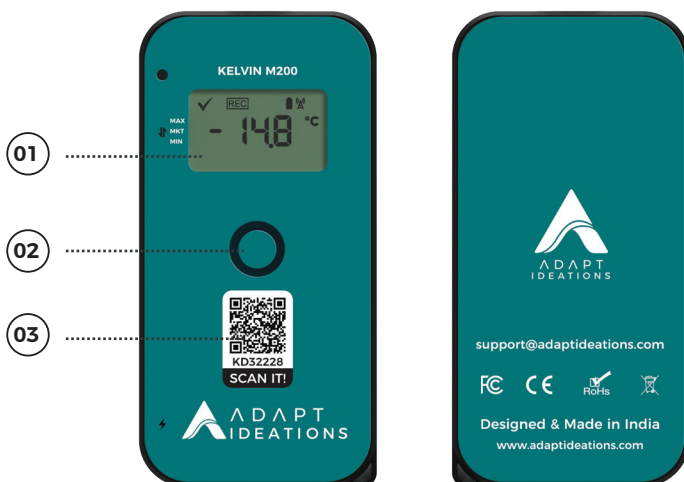


IP64 Grade



*Refer to technical specifications for minimum reading interval and transmission times.

Product Anatomy



01. LCD Screen

02. Button

03. QR Code

04. No Temperature Violation

05. Temperature Violation

06. Record Start

07. Record End

08. Shock Notification

09. Battery Charge Health
(Blinks when battery is low)

10. Cellular Connection

11. WiFi Connection
(Stable when connected)

12. Degree Celsius

13. Temperature Reading (in Deg Cel)

14. Temperature Violation Thresholds

15. Active Sensor (ti= Internal)



Visit us at www.adaptideations.com

To unlock your next innovation journey, get in touch today at enquiries@adaptideations.com



MULTI-USE CELLULAR CONNECTED TEMPERATURE DATA LOGGER WITH LCD DISPLAY

KELVIN M200



Easy To Use

CONFIGURE

Configure the data logger according to your requirement using our platform.



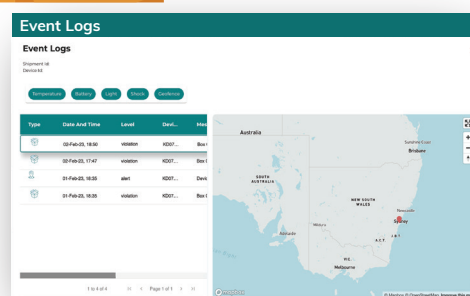
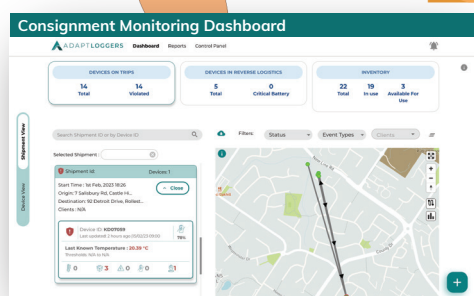
PAIR

Add the device to a consignment.



TRACK

Track the shipment on our platform.



Technical Specifications

Dimensions (L x W x H):	102mm x 52mm x 20mm
Weight:	111g
Battery Type:	Li-Poly, 3000 mAh
Battery Model:	Sunte 974058
Charging Voltage:	5V DC, USB Type C
Charging Time:	Up to 8 hours for full charge
Runtime: (Maximum Trip Duration)	30 days at 60 mins data Sending Interval and 10 mins Reading Interval
Reading Interval:	10 min by default Configurable from 5 mins to 60 mins
Sending Interval (SI):	30 min (minimum configurable)
WiFi:	2.4 GHz
Cellular:	2G/4G (CAT M1), SIM inbuilt
Temperature Sensors:	Digital
Temperature Range:	-20°C to +60°C
Temperature Accuracy	+- 0.5° C
Calibration:	Three Point Factory Calibration
Resolution	0.1°C

Probe Support	No
Recording Option	Multi-use
Standards:	FCC/CE Compliance
Environmental Rating:	IP64
Compliance:	FAA:AC 91.21 -1D, 2017, p. 91 EU: AMC1 CAT.GEN.MPA.140 As per the guidelines of IATA on Portable Electronics Devices (PEDs) Airline approved FDA 21 CFR Part 11 ISO 9001 IEC 62368
Violations:	Violations are logged as events on web-portal and devices
Notifications:	Alerts as SMS, email, pop-up (portal side)
Data Formats & Graphs:	Graphs, PDFs, CSVs (downloadable from portal)
Data Storage Capacity:	31,200 readings

*Data sheet is correct as of 07/24.

The product may be subject to minor changes and enhancements in the future.



Visit us at www.adaptideations.com

To unlock your next innovation journey, get in touch today at enquiries@adaptideations.com